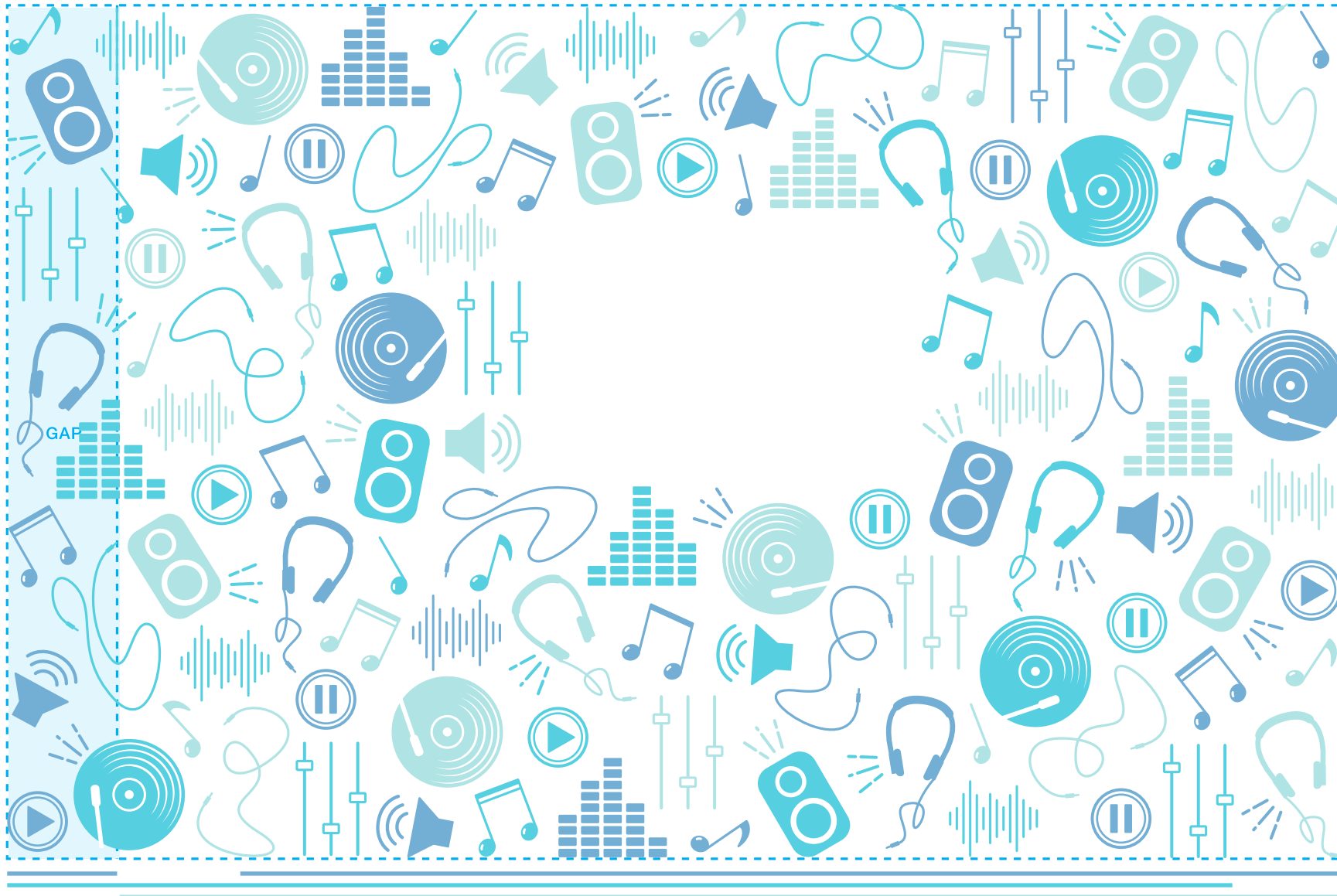


BACK

CENTER

FRONT



INSTRUCTIONS

Step 1: Place your logo and/or text in the designated imprint area.

Step 2: Hide/clear art from stock design that interferes with the appearance of your logo. The amount of art you hide/clear can vary depending on the size and shape of your logo.

Step 3: Make final color adjustments.

Step 4: Submit your final design for revision.



COLOR #1  
PMS 542



COLOR #2  
PMS 3105



COLOR #3  
PMS 317