

imprint at 100%

NOT A PROOF  
FOR CONCEPT PURPOSES ONLY

INSTRUCTIONS

Step 1: Place your logo and/or text in the designated imprint area.

Step 2: Hide/clear art from stock design that interferes with the appearance of your logo. The amount of art you hide/clear can vary depending on the size and shape of your logo.

Step 3: Make final color adjustments.

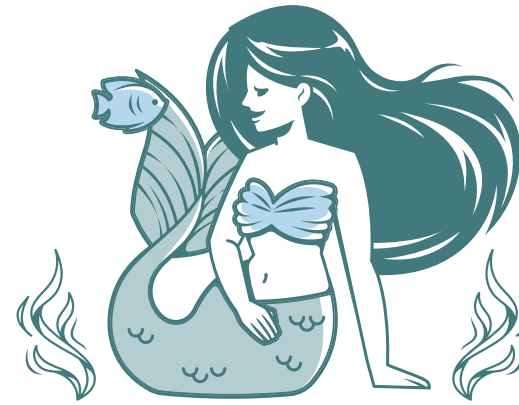
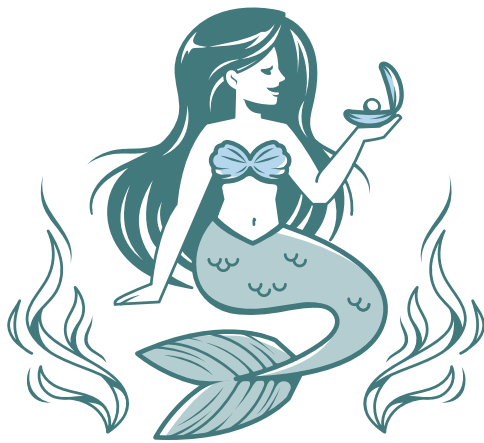
Step 4: Submit your final design for revision.

BACK

CENTER

FRONT

GAP



optional lid imprint



COLOR #1  
PMS 7475



COLOR #2  
PMS 5523



COLOR #3  
PMS 290